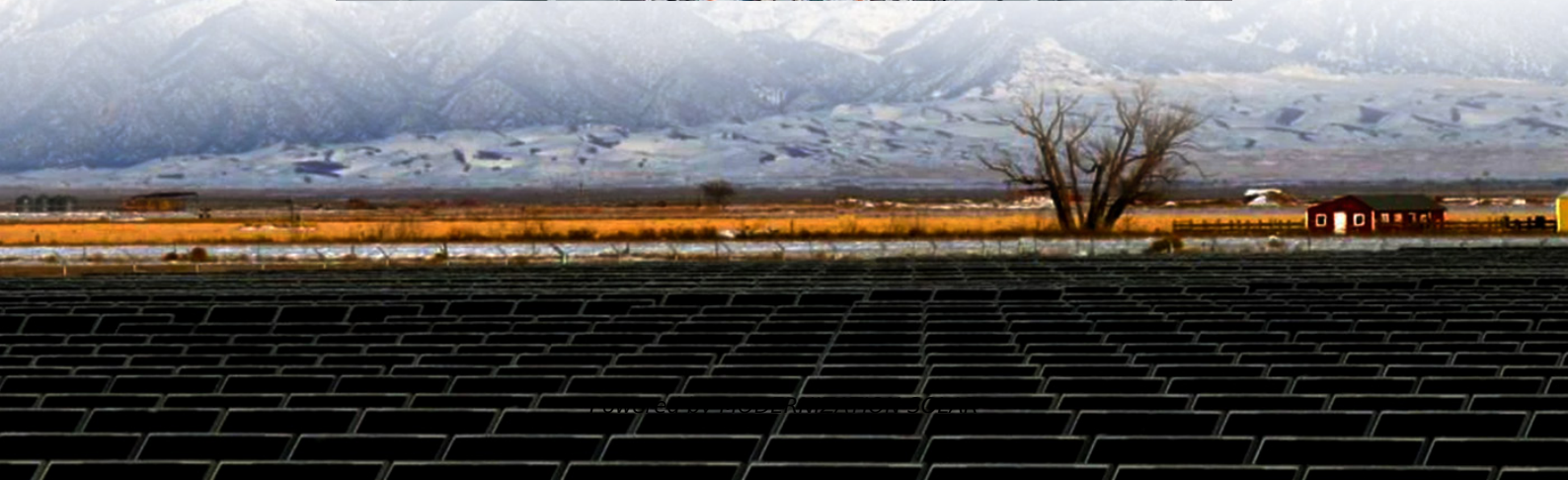


The difference between flywheel energy storage and motor





Overview

How does a flywheel energy storage system work?

Flywheel Energy Storage Systems (FESS) rely on a mechanical working principle: An electric motor is used to spin a rotor of high inertia up to 20,000-50,000 rpm. Electrical energy is thus converted to kinetic energy for storage. For discharging, the motor acts as a generator, braking the rotor to produce electricity.

How can flywheels be more competitive to batteries?

The use of new materials and compact designs will increase the specific energy and energy density to make flywheels more competitive to batteries. Other opportunities are new applications in energy harvest, hybrid energy systems, and flywheel's secondary functionality apart from energy storage.

What is the function of a flywheel?

The basic function of the flywheel is to convert the mechanical energy for the end-use application, which is electrical energy. For this conversion, an electromechanical machine is required which could be a motor/generator set. Generator and motor: When the kinetic energy is being stored, the motor is used to drive the flywheel.

How energy is stored in a flywheel rotor?

Energy is stored in a fast-rotating mass known as the flywheel rotor. The rotor is subject to high centripetal forces requiring careful design, analysis, and fabrication to ensure the safe operation of the storage device.



The difference between flywheel energy storage and motor

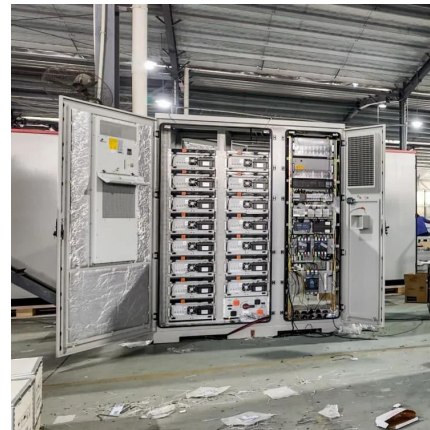


Design of Motor/Generator for Flywheel Batteries

Oct 2, 2020 · Energy storage is an emerging technology that can enable the transition toward renewable-energy-based distributed generation, reducing peak power demand and the time ...

Flywheel Energy Storage

2.4 Flywheel energy storage Flywheel energy storage, also known as kinetic energy storage, is a form of mechanical energy storage that is a suitable to achieve the smooth operation of ...



Technology: Flywheel Energy Storage

Oct 30, 2024 · Summary of the storage process Flywheel Energy Storage Systems (FESS) rely on a mechanical working principle: An electric motor is used to spin a rotor of high inertia up to ...



Flywheel Energy Storage

Flywheel energy storage technology uses reversible bidirectional motors (electric motor/generator) to facilitate the conversion between electrical energy and the mechanical ...



[Exploring the Mechanics and Future of ...](#)

Dec 5, 2025 · Discover the mechanics of flywheel motors! ? Explore their design, applications, benefits, and challenges in energy storage. Perfect ...



[A review of flywheel energy storage systems: state of the art ...](#)

Feb 1, 2022 · Thanks to the unique advantages such as long life cycles, high power density, minimal environmental impact, and high power quality such as fast response and voltage ...



Introduction to motors and controllers of flywheel energy storage ...

The paper covers the principle and characteristics of permanent magnet brushless DC motors, permanent magnet synchronous motors, induction motors and switched reluctance motors, ...





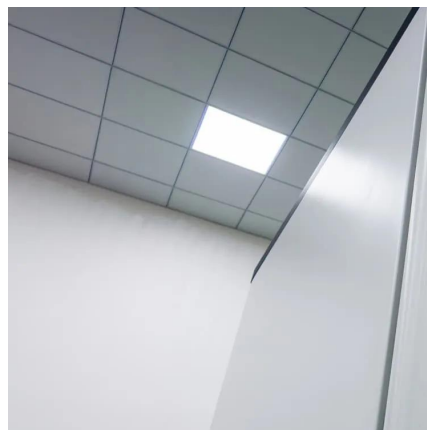
Exploring the Mechanics and Future of Flywheel Motors

Dec 5, 2025 · Discover the mechanics of flywheel motors! ? Explore their design, applications, benefits, and challenges in energy storage. Perfect for renewable energy enthusiasts! ?



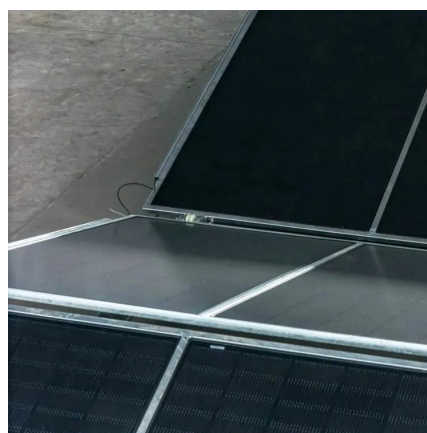
Energy Storage Flywheel Rotors--Mechanical Design

Energy storage flywheel systems are mechanical devices that typically utilize an electrical machine (motor/generator unit) to convert electrical energy in mechanical energy and vice ...



Flywheel Energy Storage System

Dec 10, 2023 · The main part of power conversion in flywheel energy storage system is the Bi-directional converter which operates as a power link between the grid and the motor/generator ...



Flywheel Energy Storage

Flywheel energy storage technology uses reversible bidirectional motors (electric motor/generator) to facilitate the conversion between electrical ...



Difference between flywheel energy storage and motor energy storage

Optimising flywheel energy storage systems for enhanced Wang et al. (2022) developed a control strategy for High-Speed Motor-Flywheel Energy Storage Systems At the maximum studied ...



Contact Us

For technical specifications, project proposals, or partnership inquiries, please visit:
<https://meble-decorator.pl>

Scan QR Code for More Information



<https://meble-decorator.pl>