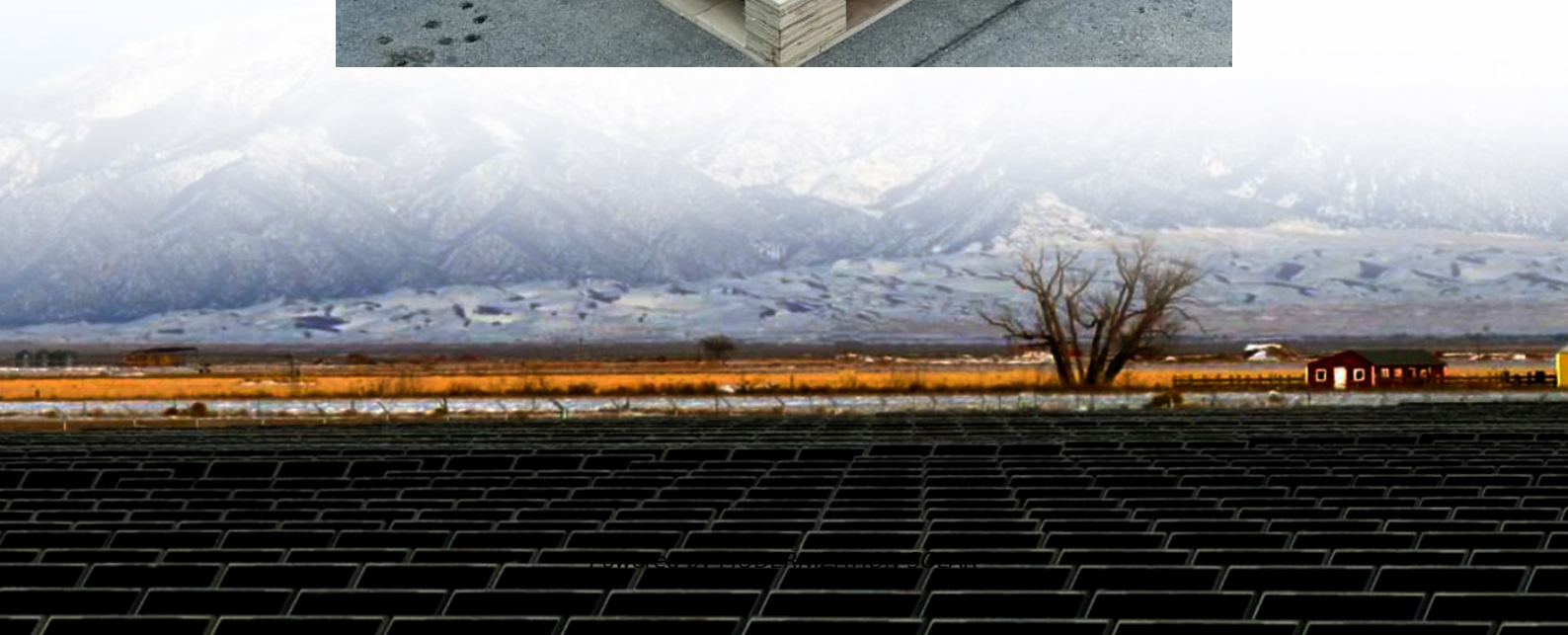


The maximum wattage of solar lights on construction sites





Overview

How much land does a 100 MW solar power plant require?

A 100 MW thermal power plant for instance would require less than 10% of the total area that a 100 MW solar PV power plant would. Solar power plants require significantly larger land areas compared to conventional power plants.

How many Watts Does a solar light need?

Working with the solar lighting specialist can help determine the requirements needed for light output. For example, signs can be illuminated with a range from a 3.4 Watt FLAB mini flood for small signs to up to 25 Watt ARF flood fixtures for large signs and billboard applications. The same thing can be said for overhead lights.

How do solar-powered construction sites work?

Solar-powered construction sites work on a combination of three components; solar panels, battery storage, and solar generators, each performing its part in providing clean renewable energy to construction operations. Solar panels are the core of any solar electricity generating system as they are used to convert sunlight into electricity.

Can solar power a construction site?

Skanska and Balfour Beatty are already testing solar technologies on projects, setting benchmarks for the rest of the industry. Solar-powered construction sites work on a combination of three components; solar panels, battery storage, and solar generators, each performing its part in providing clean renewable energy to construction operations.



The maximum wattage of solar lights on construction sites



[9 Tricks for Choosing the Right Wattage for ...](#)

1 day ago · Discover how to select the perfect wattage for outdoor lighting to maximize security, enhance aesthetics, and save energy. Learn specific ...

[What is the maximum wattage of solar ...](#)

Apr 29, 2024 · The maximum wattage of solar outdoor lights can vary depending on several factors, including the type of light, the ...



[Solar Lighting Tower on Construction Site](#)

Jul 9, 2024 · In conclusion, integrating mobile solar lighting towers into construction site operations not only promotes sustainability but also enhances safety, efficiency, and cost ...

[Solar Panel Wattage Explained: How Many ...](#)

Jul 1, 2025 · Confused about solar panel wattage? Learn how many watts you need, how solar output works, and how to calculate the right solar ...



[What Is a Good Wattage for Solar Wall ...](#)

Apr 1, 2025 · When choosing solar wall lights, wattage plays a crucial role in determining brightness, efficiency, and suitability for different outdoor ...



[Why Solar-Powered Lighting Is the Future of Construction Site](#)

Oct 21, 2025 · Why Solar-Powered Lighting Is the Future of Construction Site Illumination Proper lighting on construction sites isn't just a convenience--it's a critical safety requirement that ...



[Construction Light: Lighting Explained](#)

The Role of Sustainability in Construction Lighting Sustainability has become a focal point in construction practices, and lighting is no exception. The push for eco-friendly solutions has led ...



[Solar Panel Wattage Calculator](#)

Oct 21, 2025 · A solar panel wattage calculator can help optimize your solar power system for maximum efficiency and cost-effectiveness. This ...



[What is the maximum wattage of solar ...](#)

Jun 30, 2024 · Wattage plays a critical role in the functionality of solar lights, affecting their brightness, operational time, and suitability for various ...

[Solar-Powered Construction Sites: Energy Efficiency at Work](#)

Jan 8, 2025 · Solar-powered construction sites are heralding a transformative wave in the construction industry. Solar energy is one of the most viable alternatives.



[Power Requirement in Construction](#)

Mar 3, 2025 · Learn how to calculate power requirements in construction, choose the right power source, and ensure efficient energy management ...



Solar Lighting Design Guide - Wattage / Lumen Requirements

4 days ago · Solar lighting design guide part 2 - determining wattage and lumen output required for the project for adequate lighting level requirements.



What is the maximum wattage of a solar lamp? , NenPower

Jun 19, 2024 · The maximum wattage of a solar lamp is influenced by various factors including the design of the lamp, the type of LED used, and the solar panel's capacity. 1. Typical solar ...

Solar Lighting Tower on Construction Site

Jul 9, 2024 · In conclusion, integrating mobile solar lighting towers into construction site operations not only promotes sustainability but also ...



Why Solar-Powered Lighting Is the Future of ...

Oct 21, 2025 · Why Solar-Powered Lighting Is the Future of Construction Site Illumination Proper lighting on construction sites isn't just a ...



What Is a Good Wattage for Solar Wall Lights?

Apr 1, 2025 · When choosing solar wall lights, wattage plays a crucial role in determining brightness, efficiency, and suitability for different outdoor applications. While higher wattage ...



Solar light tower for construction sites and remote locations

Solight light tower 915 is made for maximum portability and power in hard to navigate locations. This is the ideal light tower for construction sites.

What is the maximum wattage of solar photovoltaic lights?

Jun 30, 2024 · Wattage plays a critical role in the functionality of solar lights, affecting their brightness, operational time, and suitability for various applications. As technology evolves, ...



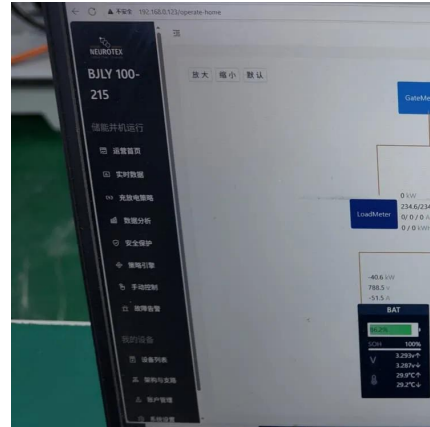
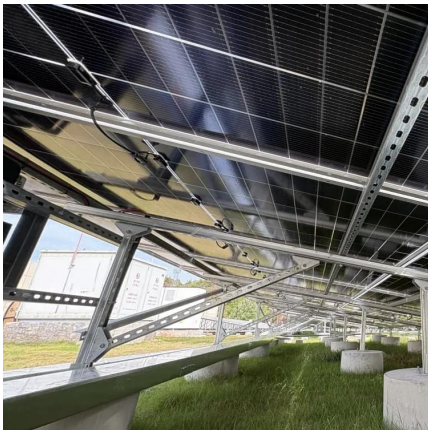
PVWatts Calculator

Oct 24, 2025 · NREL's PVWatts ® Calculator Estimates the energy production of grid-connected photovoltaic (PV) energy systems throughout the world. It allows homeowners, small building ...



What is the actual power of solar street lights?

When it comes to solar street lights, many people assume that the wattage listed on the box or website is the actual power the light provides. In ...



What is the maximum wattage of outdoor solar lights?

Feb 22, 2024 · The maximum wattage of outdoor solar lights can vary significantly based on the type and quality of the lights themselves. 1. Most outdoor solar lights typically range from 0.5 ...

How to Use Solar-Powered Lights in Remote Construction Sites?

Jul 25, 2025 · Construction projects in remote areas often face significant challenges, primarily due to the lack of reliable electricity supply. This limitation can hinder work progress, especially ...



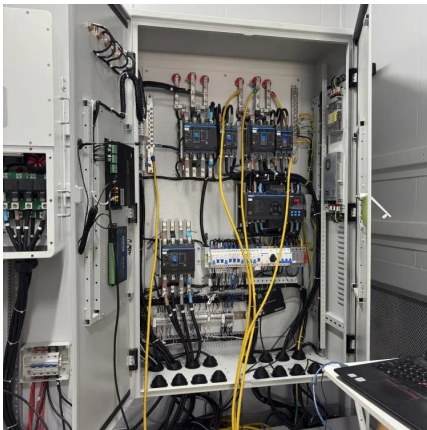
Solar Lighting Design Guide - Wattage / ...

4 days ago · Solar lighting design guide part 2 - determining wattage and lumen output required for the project for adequate lighting level ...



[LED Solar Street Light Design Guide \(2025 ...](#)

Feb 12, 2025 · 1. Solar Street Light System Design Composition and Selection Standards 1. Core Component Configuration 2.Solar Street ...



[LED Solar Street Light Design Guide \(2025 Edition\)](#)

Feb 12, 2025 · 1. Solar Street Light System Design Composition and Selection Standards 1. Core Component Configuration 2.Solar Street Light Key Design Parameter Calculations 1. Solar ...

[HOW MANY WATTS OF SOLAR LIGHTS ARE THERE ON CONSTRUCTION SITES](#)

The size of the solar panel you need will depend on a few factors, including the wattage of the lights and the average amount of sunlight your location receives.



Contact Us

For technical specifications, project proposals, or partnership inquiries, please visit:
<https://meble-decorator.pl>



Scan QR Code for More Information



<https://meble-decorator.pl>