

UPS uninterruptible power supply battery connection





Overview

What is an uninterruptible power supply (UPS)?

An uninterruptible power supply (UPS) is a component that continues operating for at least a brief period of time when the power supply is interrupted. In today's technology-driven world, an uninterruptible power supply is crucial to keep our electronic devices and systems functioning without interruption.

What makes a UPS uninterruptible?

Of the three main subsystems, the battery is what makes the system "uninterruptible". Depending upon the system design, the battery can constitute as much as 50% of the cost of the UPS. Without a reliable battery, the operation of the entire data center can be put at risk.

Does ups have a power supply?

The UPS system features its own internal current source (batteries). The UPS output sockets or output terminal blocks may be electrically live even if the UPS system is not connected to the building mains/live wires (standard models only).

What happens if a UPS battery is disconnected?

One is the circuit supplying the UPS with input power. The other is the UPS battery. Prior to any maintenance, both of these power sources must be disconnected to ensure that the UPS is de-energized. If only the input power is disconnected, the UPS can still operate from the battery, and hazardous voltages may still exist.



UPS uninterruptible power supply battery connection

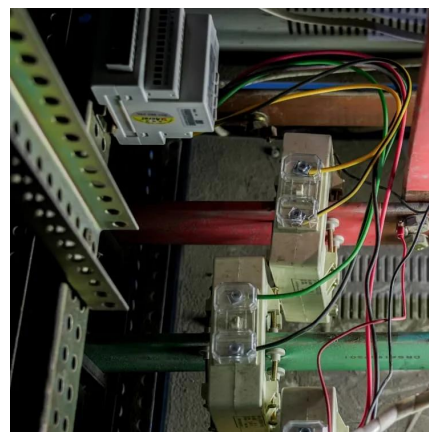


UNDERSTANDING UPS SYSTEMS AND BATTERIES

Jul 17, 2024 · UNDERSTANDING UPS SYSTEMS AND BATTERIES Putting the 'U' in UPS When it comes to an uninterruptible power supply (UPS), the battery is one of the most important ...

How to Install Uninterruptible Power Supply: A Step-By

A UPS, short for uninterruptible power supply, is a vital electrical device designed to safeguard electronic equipment from power disruptions by supplying emergency power when the primary ...



How to Connect Automatic UPS / Inverter to the Home Supply?

3 days ago · This is where generators and Inverter/UPS (Uninterruptible Power Supply) systems, supported by backup batteries, play an important role. For this purpose, we demonstrate the ...



Uninterruptible Power Supply (UPS)

A Uninterruptible Power Supply (UPS) generally consists of a rectifier, battery charger, a battery bank and inverter circuit which converts the commercial ...



[Uninterruptible Power Supply Three-Phase User Manual](#)

Jul 31, 2020 · UPS comes equipped with grounding terminal, in the final installation phase, connect grounding/earthing wire to the external UPS battery cabinets or appropriate grounding ...



[Understanding and Implementing an UPS](#)

...

UPS (Uninterruptible Power Supply) connection diagrams are essential for understanding the setup and configuration of UPS systems. These ...



[How To Install Uninterruptible Power Supply](#)

Make sure that the UPS power supply equipment is complete, including the UPS body, battery pack (if it is external), output sockets, cables, etc. Connect the battery:





[How to Connect UPS to Power Supply](#)

An uninterruptible power supply (UPS) is a component that continues operating for at least a brief period of time when the power supply is ...



Battery UPS Connection: How to Connect a Battery to an Uninterruptible

Jan 14, 2024 · An uninterruptible power supply (UPS) is a device that provides backup power in cases of a power outage or interruption. It acts as a bridge between the power source and the ...

[How to Install Uninterruptible Power Supply: ...](#)

A UPS, short for uninterruptible power supply, is a vital electrical device designed to safeguard electronic equipment from power disruptions by ...



[How to Connect UPS to Power Supply](#)

An uninterruptible power supply (UPS) is a component that continues operating for at least a brief period of time when the power supply is interrupted. In today's technology-driven world, an ...



[How to Connect Automatic UPS / Inverter to the Home ...](#)

Introduction to Automatic Inverter / Ups
Wiring Why & Where We Need Auto Ups / Inverter System? How to Connect A Ups / Inverter to The Home Supply System? Working Principle & Operation of Automatic Ups / Inverter To connect an inverter / UPS to the home electric supply system, follow the steps below: First of all, disconnect those Live (Line) wires of two circuit breakers from the main distribution board which are connected to the main double pole switch of those particular rooms (As shown in Fig) which you want to connect to the automatic supply (in both c See more on electrical technology wzmodern



How To Install Uninterruptible Power Supply

Make sure that the UPS power supply equipment is complete, including the UPS body, battery pack (if it is external), output sockets, cables, etc. ...



[Uninterruptible Power Supply \(UPS\)](#)

A Uninterruptible Power Supply (UPS) generally consists of a rectifier, battery charger, a battery bank and inverter circuit which converts the commercial ac input into dc suitable for input to ...

[What Are Series and Parallel Connections of UPS Battery ...](#)

Aug 15, 2025 · Conclusion Series and parallel connections of UPS battery packs are core technologies for optimizing power supply systems: series connection increases voltage to ...



Understanding and Implementing an UPS Connection ...

UPS (Uninterruptible Power Supply) connection diagrams are essential for understanding the setup and configuration of UPS systems. These diagrams provide a visual representation of ...

Contact Us

For technical specifications, project proposals, or partnership inquiries, please visit:
<https://meble-decorator.pl>

Scan QR Code for More Information



<https://meble-decorator.pl>