

What are the large base station communication towers





Overview

Macro towers, also known as cell towers or base stations, are tall structures designed to support antennas and other telecommunications equipment. What is the difference between a base station and a tower?

In summary, the base station is the active component responsible for network communication, while the tower is the physical structure that supports the base station. In summary, base stations are critical for modern telecommunications as they serve as the link between mobile devices and the extensive network infrastructure that spans the globe.

What are telecommunication towers?

In 2025, telecommunication towers stand as engineering marvels, driving global connectivity by powering 5G networks for smart cities, autonomous vehicles, and disaster recovery operations. With a global market valued at \$50.94 billion and growing at a 4.22% CAGR, these towers support over 4 million base stations in Asia-Pacific alone.

How many base stations does a telecom tower support?

With a global market valued at \$50.94 billion and growing at a 4.22% CAGR, these towers support over 4 million base stations in Asia-Pacific alone. This guide provides a comprehensive exploration of how telecom towers operate, detailing signal transmission, advanced 5G technologies, sustainability innovations, and safety protocols.

Why are base stations important for modern telecommunications?

In summary, base stations are critical for modern telecommunications as they serve as the link between mobile devices and the extensive network infrastructure that spans the globe. The strategic deployment and ongoing improvement of these stations are essential for maintaining global connectivity.



What are the large base station communication towers



[What is a Communication Tower? Exploring ...](#)

Dec 2, 2025 · What is a communication tower? Get insights into its role in transmitting signals for mobile, radio, and internet networks.

[Telecommunication Towers: The Backbone of Modern ...](#)

Jan 24, 2025 · In the digital age, telecommunication towers are pivotal in enabling seamless connectivity. These towering structures serve as the backbone of global communication ...



[Rooftop tower base station: the 'invisible communication ...](#)

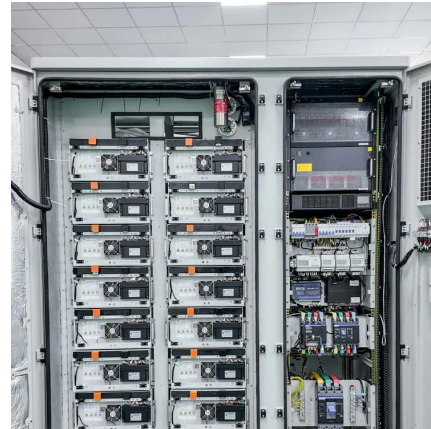
Jan 7, 2025 · From a high altitude in the city, the tower base stations on rooftops resemble steel guardians standing at the top of various buildings. It belongs to a type of macro base station, ...

[What Is a Base Station? Definition and How It Works](#)

Oct 10, 2025 · A base station is a fixed transceiver that serves as the central communication point for mobile devices within a defined geographical area, known as a cell. It is



sometimes called ...



Macrocell vs. Small Cell vs. Femtocell: A 5G ...

Oct 20, 2023 · A macrocell is a cellular base station that sends and receives radio signals through large towers and antennas. Cell towers, in ...

A Field Guide To The North American ...

Apr 5, 2016 · These are used to distribute the base station equipment between the tower and the ground. The RRH itself is a small rectangular ...



Understanding Macro Towers: The Backbone of Wireless ...

Apr 18, 2024 · These towers are crucial for enabling wireless communication over large areas, including cellular phone services, data transmission, and radio broadcasting. Understanding ...



[Breaking Down Base Stations - A Guide to ...](#)

May 31, 2022 · Wondering what telecom sites really look like? Find everything you need to know about telecom sites, towers, and their ...

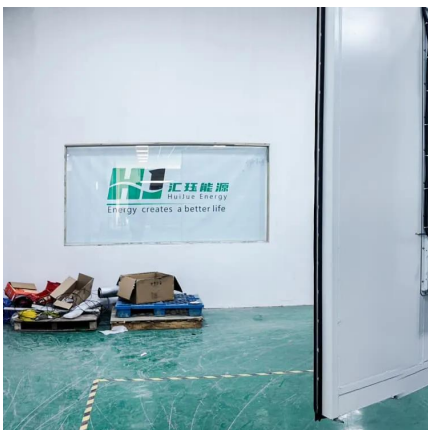
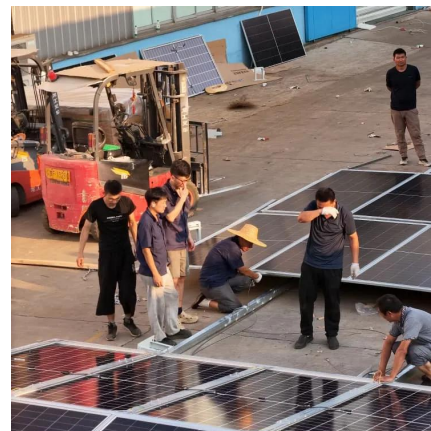


Macro Cell Base Station

MBS, or Macro Base Station, refers to an omni-directional communication tower in a mobile network that serves a large area, typically characterized by a significant inter-site distance of ...

[Understanding Telecommunication Towers](#)

Feb 25, 2024 · Telecommunication towers are the backbone of modern communication networks, providing the infrastructure necessary for wireless communication across vast distances. ...



What is a base station?

Mar 4, 2021 · The size of the base station depends on the size of the area covered, the number of clients supported and the local geography. Cell ...



Types of Base Stations

Jul 23, 2025 · Base stations are one of the widely used components in the field of wireless communication and networks. It is an access point or ...



Biological effects from exposure to ...

May 30, 2024 · The siting of cellular phone base stations and other cellular infrastructure such as roof-mounted antenna arrays, especially in ...



Rooftop tower base station: the 'invisible ...

Jan 7, 2025 · From a high altitude in the city, the tower base stations on rooftops resemble steel guardians standing at the top of various buildings. ...



Telecommunication Towers: The Backbone of ...

Jan 24, 2025 · In the digital age, telecommunication towers are pivotal in enabling seamless connectivity. These towering structures serve as the ...



Understanding Telecommunication Towers

Feb 25, 2024 · Telecommunication towers are the backbone of modern communication networks, providing the infrastructure necessary for ...



What Is A Base Station?

Apr 22, 2024 · A base station is an integral component of wireless communication networks, serving as a central point that manages the transmission and reception of signals between ...

Understanding Base Stations: The Backbone of Wireless Communication

Jan 6, 2025 · Whether in the form of large macro stations or tiny small cells, base stations will continue to evolve, providing the foundation for next-generation communication technologies ...



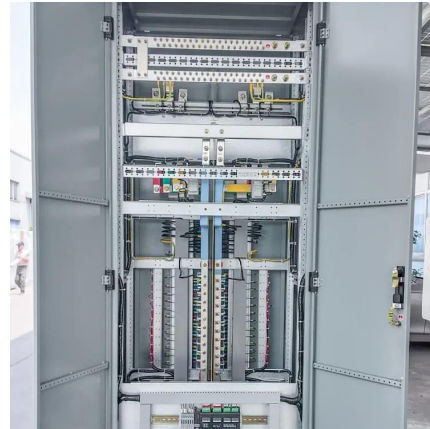
What is a Base Station?

Jan 18, 2022 · A base station works as the main communication point for one or more wireless mobile devices. It is a fixed transceiver capable of ...



What is a base station and how are 4G/5G ...

Aug 16, 2022 · Base station is a stationary trans-receiver that serves as the primary hub for connectivity of wireless device communication.

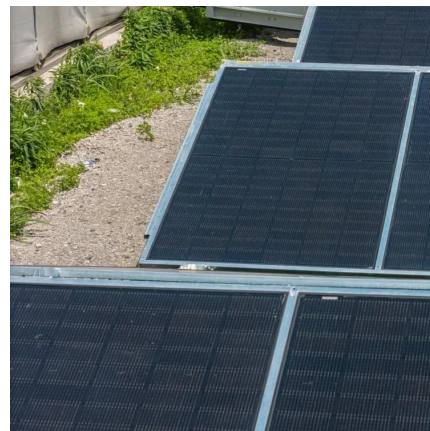


Base Stations

Jul 23, 2025 · The present-day tele-space is incomplete without the base stations as these constitute an important part of the modern-day scheme of wireless communications. They are ...

Base Stations

Jul 23, 2025 · The present-day tele-space is incomplete without the base stations as these constitute an important part of the modern-day scheme ...



How Do Telecommunication Towers Work? A ...

Oct 17, 2025 · Introduction In 2025, telecommunication towers stand as engineering marvels, driving global connectivity by powering 5G networks for smart cities, autonomous vehicles, ...



Contact Us

For technical specifications, project proposals, or partnership inquiries, please visit:
<https://meble-decorator.pl>

Scan QR Code for More Information



<https://meble-decorator.pl>