

What are the types of single-phase bridge inverters





Overview

What is single phase inverter?

As the name says it all, a single-phase inverter connection has a single-phase power load and alternative switches to counterbalance them. There are two types of single-phase inverters – half-bridge inverter and full-bridge inverter. Now that you know what is single phase inverter, you must also know its types, which include:.

What is a single phase full bridge inverter?

The power circuit of a single phase full bridge inverter is constructed with precision, featuring four thyristors labeled T1 to T4 , four diodes D1 to D4 and a two wire DC input power source denoted as V_s .

How to control the output frequency of a single phase full bridge inverter?

The output frequency can be controlled by controlling the turn ON and turn OFF time of the thyristors. The power circuit of a single phase full bridge inverter comprises of four thyristors T1 to T4, four diodes D1 to D1 and a two wire DC input power source V_s .

What is a three phase inverter?

It is nothing but three single phase inverters put across the same DC source. The pole voltages in a three phase inverter are equal to the pole voltages in single phase half bridge inverter. The two types of inverters above have two modes of conduction – 180° mode of conduction and 120° mode of conduction.



What are the types of single-phase bridge inverters



Single-Phase Inverters

Full-bridge inverters offer improved performance and are often used in many single-phase inverter applications, including motor drives, solar inverters, and UPS systems, despite having a larger ...

[Single Phase Inverter - Working, Circuit Diagram & Waveforms](#)

Jul 10, 2021 · In this topic, you study Single Phase Inverter - Working, Circuit Diagram & Waveforms. Single Phase Inverter is an electrical circuit, converts a fixed voltage DC to a fixed ...



[Single Phase Full Bridge Inverter Explained](#)

Aug 3, 2020 · This article explains Single Phase Full Bridge Inverter, circuit diagram, various relevant waveforms & comparison between half and full ...

[Single Phase Full Bridge Inverter Explained](#)

Aug 3, 2020 · This article explains Single Phase Full Bridge Inverter, circuit diagram, various relevant waveforms & comparison between half and full bridge inverters.



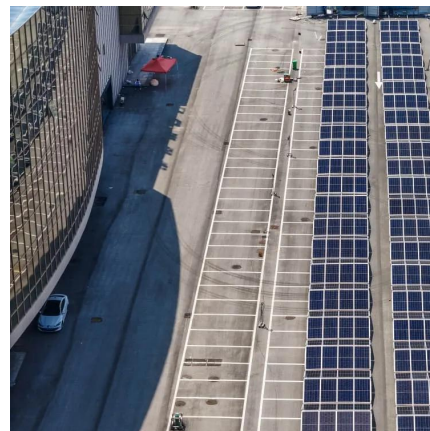
UNIT V INVERTERS

Sep 12, 2025 · Single Phase Full Bridge Inverter for R-L load: A single-phase square wave type voltage source inverter produces square shaped output voltage for a single-phase load. Such ...



Half Bridge Inverter : Circuit, Advantages.

If the dc input is a voltage source then the inverter is known as VSI (Voltage Source Inverter). The inverters need four switching devices whereas half ...



Single-phase full-bridge inverter

Mar 12, 2024 · This conversion is accomplished by utilizing a diode bridge circuit, which enables higher efficiency compared to alternative inverter designs. Single-phase inverters are simpler ...





Single Phase Inverter Techniques a Review

Jun 15, 2016 · 2. LITERATURE REVIEW Fig -2:
Single Phase full bridge inverter [9] There are
two types of single phase inverters i.e. full bridge
inverter and half bridge inverter.



Power Electronics

Single Phase Inverter There are two types of
single phase inverters - full bridge inverter and
half bridge inverter. Half Bridge Inverter This
type of inverter is the basic building block of a
full ...

Single Phase Inverter: A Complete Guide with Types & Benefits

Learn about single-phase inverters, their
benefits, types, and how to choose the right one
for your needs with this comprehensive guide.
Read more now!



Single-Phase Bridge Inverter

A single-phase bridge inverter is defined as a
type of DC-AC inverter that converts direct
current (DC) into alternating current (AC) using a
bridge configuration, typically employed in ...



[Single Phase Inverter: A Complete Guide with ...](#)

Learn about single-phase inverters, their benefits, types, and how to choose the right one for your needs with this comprehensive guide. Read more now!



[Single-Phase & Three-Phase Inverters: Function and Operation](#)

Jun 15, 2024 · Learn more about the features of single-phase and three-phase inverters, their operation and industrial applications.

Single-Phase Inverters

Introduction Inverters are crucial components in power electronics because they transform DC input voltage to AC output voltage. Talking about single-phase inverters, these convert a DC ...



Single Phase Inverter

Single-phase inverters are generally simpler and more cost-effective to design and implement than three-phase inverters. Their simplicity makes installation and maintenance easier, making ...



CLASSIFICATION of Inverters

Jun 24, 2021 · There are two types of single-phase inverters - a) full bridge inverter b) half bridge inverter Three Phase Inverter- Three Phase inverter ...



Single Phase Inverter

Jul 23, 2025 · Single Phase Inverter A single-phase inverter is a type of inverter that converts DC source voltage into single-phase AC output voltage at a desired voltage and frequency and it ...

Single Phase Full Bridge Inverter Explained

Circuit Diagram of Single Phase Full Bridge Inverter
Working Principle of Single Phase Full Bridge Inverter
Comparison Between Half & Full Bridge Inverters
The working principle of single phase full bridge inverter is based on the sequential triggering of thyristors placed diagonally opposite. This means, for half of time period, thyristors T3 & T4 will be triggered while for the remaining half of time period, T1 & T2 will be triggered. Only two thyristors are turned ON in half of the time period. Car See more on electricalbaba TutorialsPoint



Power Electronics - Types of Inverters - Online Tutorials Library

Single Phase Inverter There are two types of single phase inverters - full bridge inverter and half bridge inverter. Half Bridge Inverter This type of inverter is the basic building block of a



full ...

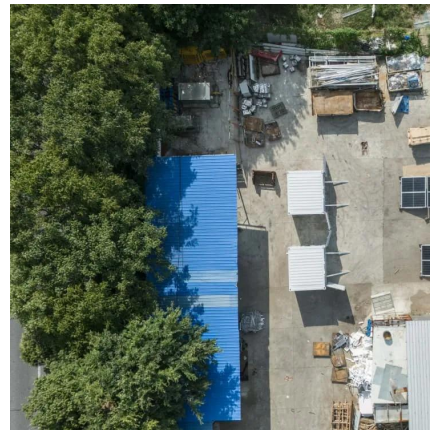


[Inverter Basics: Classification and Applications](#)

Jan 3, 2021 · In need of high-power three-phase inversion applications, three-phase inverters are preferred. However, inversion in these types of inverters is more intricate than that of in single ...

[75 Single Phase Inverter Multiple Choice Questions with ...](#)

Feb 22, 2023 · The load connected (Single phase, Three phases), and output characteristics. A single-phase inverter is further classified as half bridge and full bridge; whereas a three-phase ...



Contact Us

For technical specifications, project proposals, or partnership inquiries, please visit:
<https://meble-decorator.pl>

Scan QR Code for More Information



<https://meble-decorator.pl>