

What do BMS and PCM mean for lithium batteries





Overview

What are PCM and BMS in lithium polymer batteries?

This article will introduce you to the roles of the Protection Circuit Module (PCM) and the Battery Management System (BMS) in lithium polymer batteries. PCM stands for Protection Circuit Module, a crucial component in lithium polymer batteries that safeguards the battery from common issues that could harm its performance or lead to safety hazards.

Does a battery management system need a PCM?

Both lithium batteries and lithium battery packs often require PCMs for basic protection. However, if you're looking for enhanced control and performance, electric vehicles and solar energy storage systems benefit from a BMS. Learn the key differences between Battery Management Systems (BMS) and Protection Circuit Modules (PCM).

What are battery management systems (BMS) & protection circuit modules (PCM)?

When it comes to managing the safety and efficiency of batteries, especially in devices like electric vehicles or portable energy storage systems, two key electronic components come into play: Battery Management Systems (BMS) and Protection Circuit Modules (PCM).

What is a lithium ion battery breaker (PCM)?

A PCM is a basic safety circuit that protects lithium-ion (Li-ion) and lithium-polymer (Li-po) batteries from potential damage. Think of it as a “circuit breaker” that prevents dangerous conditions from harming the battery. Overcharge/Over-Discharge: Cuts off power if voltage exceeds safe limits.



What do BMS and PCM mean for lithium batteries



[Lithium Polymer Battery's PCM and BMS](#)

Nov 19, 2025 · In lithium polymer batteries, terms like PCM and BMS are frequently mentioned. But what do they mean, and why are they crucial for your battery's performance and safety? ...

[BMS vs. PCM: What's the Difference in Battery ...](#)

Jan 16, 2025 · Introduction When it comes to managing the safety and efficiency of batteries, especially in devices like electric vehicles or ...



[BMS vs. PCM: What's the Difference in Battery Protection?](#)

Jan 16, 2025 · Introduction When it comes to managing the safety and efficiency of batteries, especially in devices like electric vehicles or portable energy storage systems, two key ...



[BMS vs PCM: Which is better for small battery packs?](#)

Apr 24, 2025 · The protection circuit module (PCM) is an essential safety component integrated into the battery pack, especially in lithium-ion batteries. It is like a basic



"bodyguard" for the ...

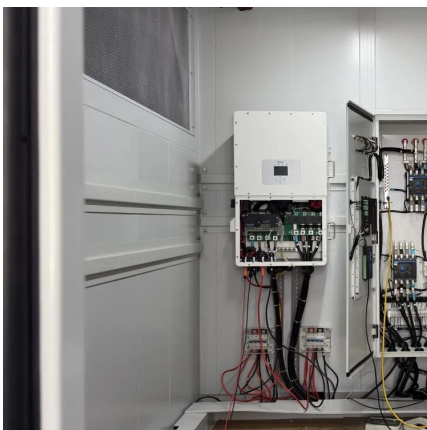
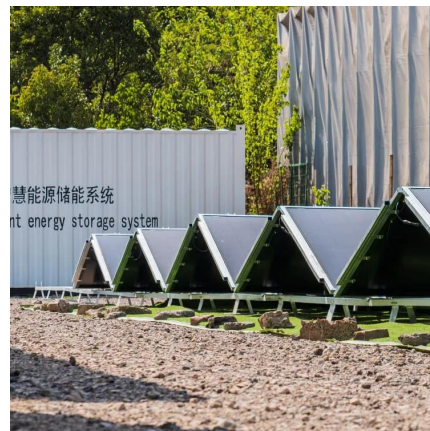


Lithium-Ion Protection Boards: PCB vs PCM vs BMS

May 16, 2025 · 1. What Is a Battery PCB and How Does It Work? A protective PCB--often called a PCM or as part of a BMS--sits between the cell array and the pack terminals. It continuously ...

Lithium Polymer Battery's PCM and BMS

Nov 19, 2025 · In lithium polymer batteries, terms like PCM and BMS are frequently mentioned. But what do they mean, and why are they crucial ...



Battery Smarts: Understanding PCM vs. BMS in Modern ...

A PCM is a basic safety circuit that protects lithium-ion (Li-ion) and lithium-polymer (Li-po) batteries from potential damage. Think of it as a "circuit breaker" that prevents dangerous ...



BMS vs PCM: Real Performance Differences ...

Aug 21, 2025 · The selection of appropriate battery protection circuitry represents a critical design decision that directly impacts both safety and ...



The Smart Battery Lithium, Balancing, PCM, ...

Dec 21, 2024 · Smart batteries, particularly those utilizing lithium-ion technology, incorporate advanced features like balancing, Protection ...



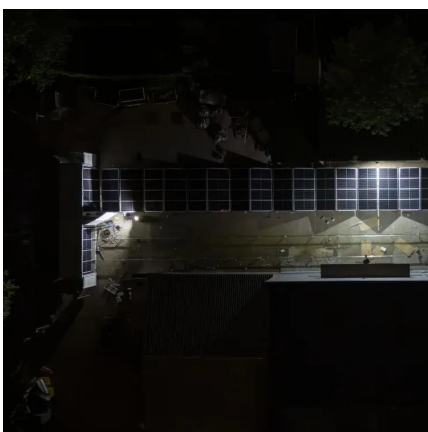
PCM vs BMS in Lithium Batteries Differences and Selection ...

Nov 18, 2025 · Lithium batteries remain one of the most important power sources for modern devices--from medical equipment and wearables to consumer electronics, drones, and ...



BMS vs PCM: Real Performance Differences That Matter ...

Aug 21, 2025 · The selection of appropriate battery protection circuitry represents a critical design decision that directly impacts both safety and operational performance. Protection Circuit ...





[BMS vs PCM: Which is better for small battery ...](#)

Apr 24, 2025 · The protection circuit module (PCM) is an essential safety component integrated into the battery pack, especially in lithium-ion ...



[What is the difference between PCM and BMS battery?](#)

Nov 29, 2023 · Both PCM and BMS batteries play crucial roles in ensuring the optimal performance and safety of lithium-ion batteries. While they have similarities in terms of ...



[PCM vs. BMS: Understanding the Key Differences and Which ...](#)

Sep 25, 2024 · Discover the key differences between Protection Circuit Modules (PCM) and Battery Management Systems (BMS) to determine which is right for your battery-powered ...



[The Smart Battery Lithium, Balancing, PCM, BMS Introduction](#)

Dec 21, 2024 · Smart batteries, particularly those utilizing lithium-ion technology, incorporate advanced features like balancing, Protection Circuit Modules (PCM), and Battery Management ...





Lithium-Ion Protection Boards: PCB vs PCM vs ...

May 16, 2025 · 1. What Is a Battery PCB and How Does It Work? A protective PCB--often called a PCM or as part of a BMS--sits between ...



Contact Us

For technical specifications, project proposals, or partnership inquiries, please visit:
<https://meble-decorator.pl>

Scan QR Code for More Information



<https://meble-decorator.pl>