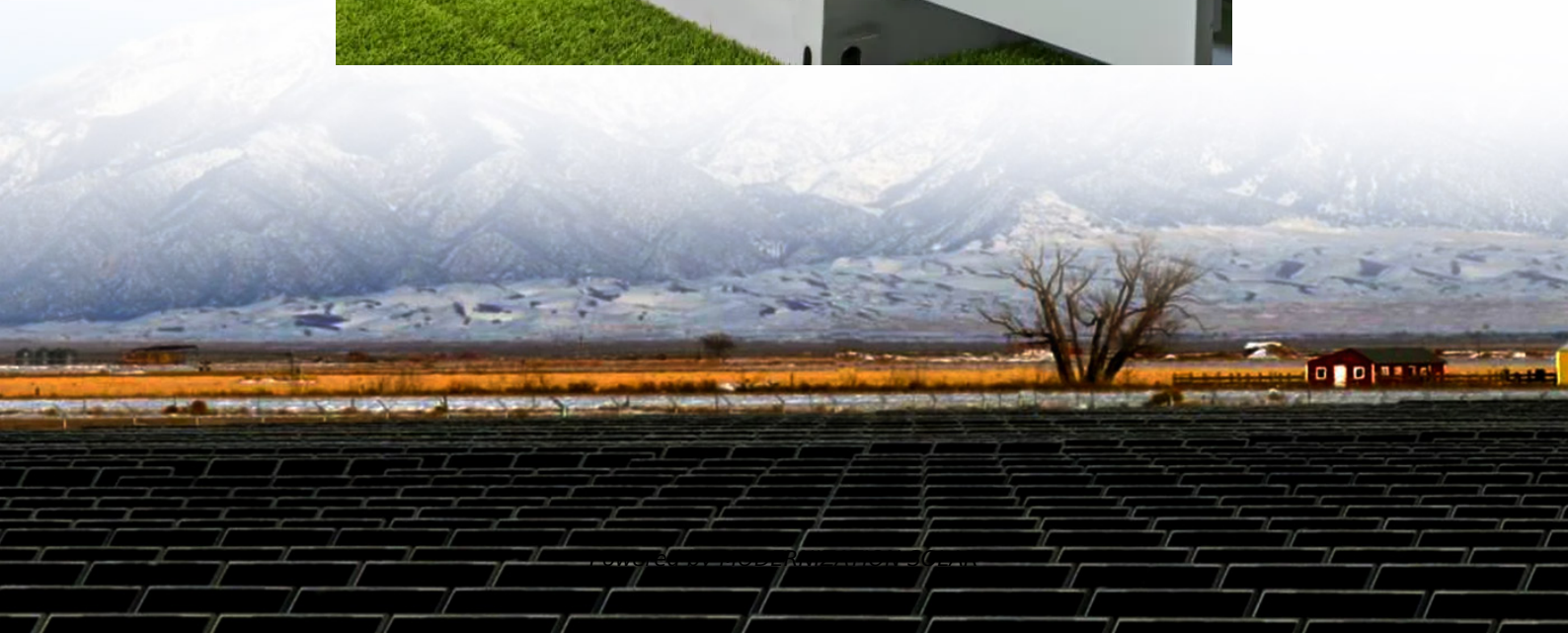


What does 12 volt inverter k1 refer to





Overview

What is a 12V DC power inverter?

This is where a power inverter comes in. Definition and Working Principle A 12V DC power inverter is a device that converts low-voltage direct current (DC) power from a 12V battery (such as a car battery or deep-cycle battery) into 120V alternating current (AC) power, making it suitable for household appliances and electronic devices.

Are 12V inverters commonly used in RVs and solar power systems?

Yes, 12V inverters are commonly used in RVs and solar power systems. When choosing an inverter for these setups, ensure that it is compatible with your battery bank and solar panel capacity. This ensures your system runs efficiently and can handle the load of various devices without issues.

What type of power does a power inverter use?

In many off-grid or mobile power scenarios, standard household appliances require AC (alternating current) power, but most batteries and vehicle power systems provide DC (direct current) power at 12 volts. This is where a power inverter comes in. Definition and Working Principle.

How a PV inverter is ready to generate power?

in Switch (AC) ON first. Switch the DC switch ON. If the voltage of PV arrays are higher than start up voltage, the inverter supply to the inverter, it will be ready to generate power. Initially, the inverter will check both its internal parameters and the parameters of the AC grid, to ensure that they



What does 12 volt inverter k1 refer to

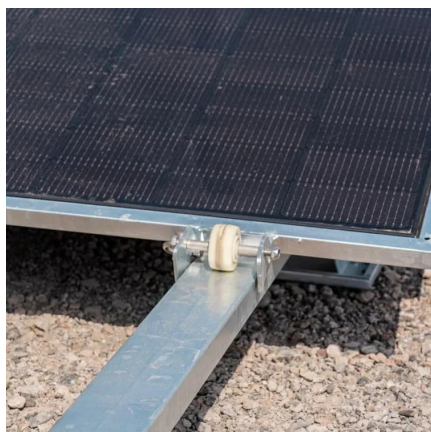


9. Inverter Settings

Sep 17, 2024 · To set the voltage at which the inverter restarts after low voltage shut-down. - To prevent rapid fluctuation between shut-down and start up, it is recommended that this value be ...

[What does 12 volt inverter k1 refer to](#)

What is the difference between 12V and 24V inverters? Generally, 12V inverters are most common to use in things like RVs, trucks, boats, vans, solar panel systems, and small cabins. ...



[Message K1-Open, K2-Open, K1-Close or K2-Close](#)

Nov 9, 2022 · The message K1-Open / K2-Open and K1-Close / K2-Close indicate a disturbance of the grid relays in the inverter. The inverter checks the grid relays before connecting to the grid.

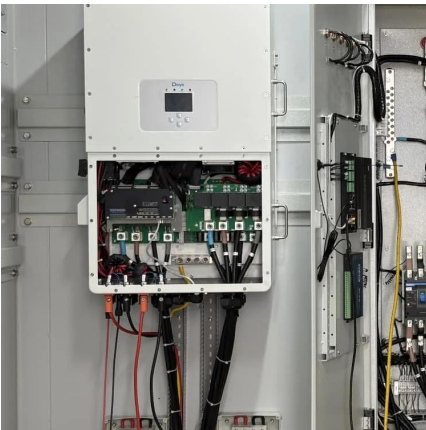
[12 Volt DC Power Inverter: In-Depth Learning and Buying ...](#)

Mar 31, 2025 · A 12-volt DC power inverter is an essential device for converting 12V direct current (DC) from a battery into 120V alternating current (AC), allowing you to power standard ...



Solar Inverter 1 Kilo Watt 12 Volt

Default Battery System Voltage 12 VDC
INVERTER OUTPUT Rated Power 1400VA/720W
Waveform Modified Sine-wave Nominal Output
Voltage RMS 230V Output Voltage Regulation ...



12KTL M1 15KTL M1/20KTL M2 Grid-Connected Inverter

Apr 25, 2024 · Check whether the polarity of the connecting cable of the photovoltaic string is correct, and ensure that the open circuit voltage under any condition does not exceed the ...



Solar Inverter 1 Kilo Watt 12 Volt

Default Battery System Voltage 12 VDC
INVERTER OUTPUT Rated Power 1400VA/720W
Waveform Modified Sine-wave Nominal Output
Voltage ...





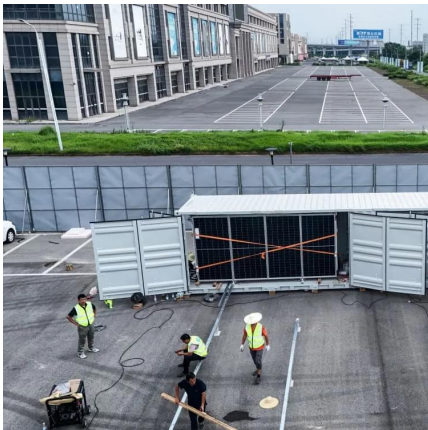
USER MANUAL

May 11, 2025 · The NON-ISO X1 logic board uses internal buck transformers to step down battery pack voltage from pin K1-24 to lower voltage for internal inputs and outputs. K1 Ground pins ...



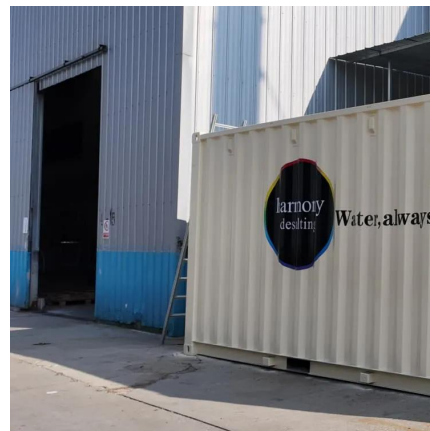
[AiSWEI Technology \(Shanghai\) Co.,Ltd.](#)

Aug 23, 2023 · Check the grid voltage and compare with the permissive voltage range (Please refer to technical data). Disconnect the circuit board from all the phases and secure against re ...



Multifunction inverter

Jan 20, 2023 · PV inverter without mains power supply Island operation possible Installed PWM solar charge controller 1000, 2000, 3000, 4000, 5000 W nominal load 12, 24, 48 VDC Battery ...



[Switchover Contactor Logic](#)

Sep 2, 2024 · The contactor logic in the image is for a switchover power supply (from Grid power to PV inverter EPS/UPS output): The idea is that when there is a grid fault, then T1 changes ...





[12 Volt DC Power Inverter: In-Depth Learning ...](#)

Mar 31, 2025 · A 12-volt DC power inverter is an essential device for converting 12V direct current (DC) from a battery into 120V alternating ...



Contact Us

For technical specifications, project proposals, or partnership inquiries, please visit:
<https://meble-decorator.pl>

Scan QR Code for More Information



<https://meble-decorator.pl>