

What does outdoor power ampere-hour mean





Overview

What is an ampere hour (Ah or amp hour)?

Ampere hours -- sometimes abbreviated as Ah or amp hours -- is the amount of energy charge in a battery that enables 1 ampere of current to flow for one hour. Another way of saying it is that 1 Ah is the rating indicating how much amperage a battery can provide for one hour.

What is an amp hour?

An amp hour is a measurement of how many amps flow over a one hour period. For example, a 150 Ah battery would be able to expel 150 amps in one hour, or 150 Ah. This same 150 Ah battery would expel 300 amps in two hours, or 300 Ah. In short, amp hours show how much current a battery can supply for a certain period of time.

How to convert watt hours to ampere-hours?

If we want to convert watt-hours to ampere-hours, we need to go through these steps: $\text{Watt hours (Wh)} = \text{Amp hour (Ah)} \times \text{Volts (V)}$ This calculation gives you the total energy capacity and gives context to the work done by a battery. For example, to calculate total energy from a 60V and 20Ah ebike battery, you would calculate $20\text{Ah} \times 60\text{v} = 1200\text{Wh}$.

What are amp hours & watt hours?

Amp-hours (Ah) measure the electric charge a battery can deliver over time. Unlike watt hours, which indicate total energy use, amp hours show the available current over a set period, and are calculated as: $\text{Amp Hours (Ah)} = \text{Current (Amps)} \times \text{Time (Hours)}$



What does outdoor power ampere-hour mean

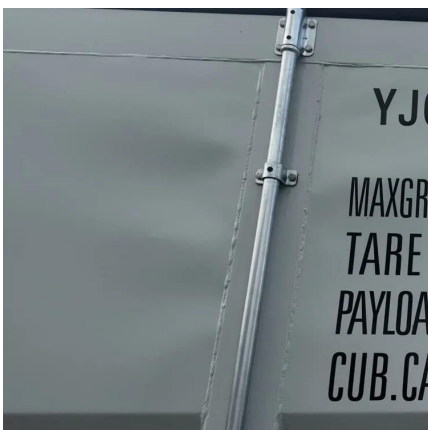
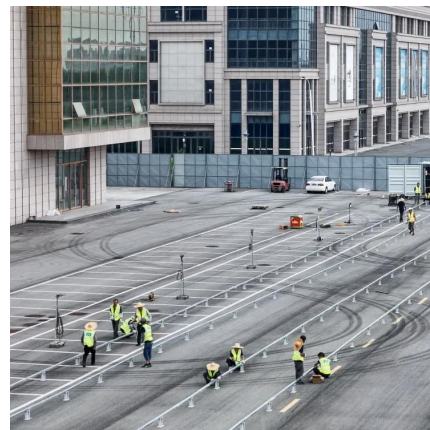


[Watt Hours & Amp Hours: What Are They? , Heamar](#)

Feb 10, 2025 · Here are a few applications: Solar Power Systems: Estimating daily energy needs in Wh helps size solar panels and battery setups efficiently, especially for areas with specific ...

[Amp hours VS. Watt hours: What's the ...](#)

Jul 14, 2025 · Amp hours (Ah) is the unit for battery charge capacity; it represents the amount of electric charge passing through a current of 1 ...

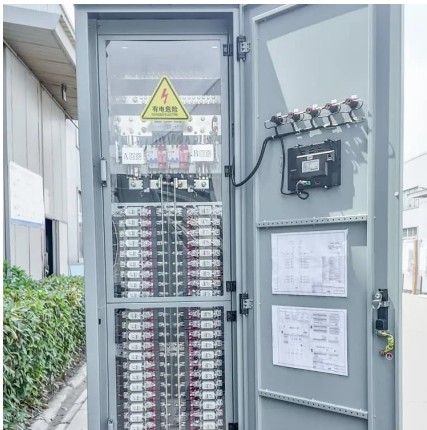


Outdoor power supply FAQ: What does the watt of outdoor power supply mean?

Aug 22, 2024 · The capacity of an outdoor power supply refers to the maximum amount of electricity it can store, in ampere-hours (Ah) or watt-hours (Wh). The capacity of an outdoor ...

[What does outdoor power ampere-hour mean](#)

Nov 21, 2025 · What does outdoor power ampere-hour mean Overview Ampere-hour measures a battery's charge capacity, indicating how much current it can supply over time. For example, a ...



[What is an ampere hour \(Ah or amp hour\)?](#)

May 17, 2022 · The following is another example:
Current = 15 A Discharge time = 5 hours
Ampere hour = 15×5 or 75 Ah for 5 hours The
ampere hour rating is displayed on the battery.
...

[What's the Difference Between Amps and ...](#)

Jan 16, 2025 · Amps and amp-hours are key terms for battery performance. Learn the differences and how to choose the right battery for your needs.



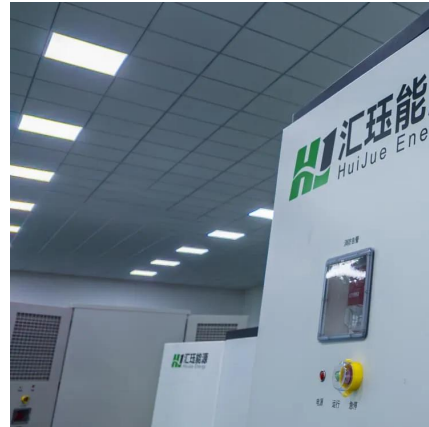
[Watt Hours & Amp Hours: What Are They?](#)

Feb 10, 2025 · Here are a few applications: Solar Power Systems: Estimating daily energy needs in Wh helps size solar panels and battery setups ...



What is an ampere hour (Ah or amp hour)?

May 17, 2022 · The following is another example:
Current = 15 A Discharge time = 5 hours
Ampere hour = 15×5 or 75 Ah for 5 hours The ampere ...



What True Ampere-Hours Mean and How to Calculate Them

May 21, 2025 · True ampere-hours reflect a battery's real capacity under conditions like temperature and discharge rates. Learn how to calculate and optimize battery performance.

What True Ampere-Hours Mean and How to ...

May 21, 2025 · True ampere-hours reflect a battery's real capacity under conditions like temperature and discharge rates. Learn how to calculate ...



Amp-Hours Explained: Your Battery Capacity ...

Oct 13, 2024 · Learn what amp-hours (Ah) mean, how they differ from kWh, and why understanding Ah is key when sizing solar battery storage.



[The Difference In Amp Hours and Watt Hours , RELiON](#)

To understand how much energy you will need to store in order to power your essentials, you will need to know what watts hours and amp hours are and how they are different from each other.

...



[Does Higher Amp Hours Mean More Power? \(Ah vs. Watt\)](#)

Oct 24, 2025 · Definition: Amp-hours (Ah) are a unit of electric charge. Specifically, one Amp-hour is the charge transferred by a steady current of one ampere flowing for one hour. What it ...

[What's the Difference Between Amps and Amp-Hours?](#)

Jan 16, 2025 · Amps and amp-hours are key terms for battery performance. Learn the differences and how to choose the right battery for your needs.



[Amp-Hours Explained: Your Battery Capacity Guide](#)

Oct 13, 2024 · Learn what amp-hours (Ah) mean, how they differ from kWh, and why understanding Ah is key when sizing solar battery storage.



[Amp hours VS. Watt hours: What's the difference?](#)

Jul 14, 2025 · Amp hours (Ah) is the unit for battery charge capacity; it represents the amount of electric charge passing through a current of 1 ampere in 1 hour. Watt-hours (Wh) is a unit of ...



Contact Us

For technical specifications, project proposals, or partnership inquiries, please visit:
<https://meble-decorator.pl>

Scan QR Code for More Information



<https://meble-decorator.pl>