

What is the base station communication distance





Overview

What is a base station in telecommunications?

In telecommunications, a base station is a fixed transceiver that is the main communication point for one or more wireless mobile client devices. A base station serves as a central connection point for a wireless device to communicate.

Why are base stations important?

Base stations are the backbone of wireless communication networks, playing a pivotal role in signal transmission, network reliability, and high-speed data connectivity. As technology evolves, the importance of base stations will continue to grow, addressing new challenges and supporting the ever-expanding demand for wireless communication services.

Why are base stations important in cellular communication?

Base stations are important in the cellular communication as it facilitate seamless communication between mobile devices and the network communication. The demand for efficient data transmission are increased as we are advancing towards new technologies such as 5G and other data intensive applications.

Is a base station a transmitter or broadcast point?

Base stations are generally a transceiver, capable of sending and receiving wireless signals; otherwise, if they only transmitted signals out, they would be considered a transmitter or broadcast point. A base station will have one or more radio frequency (RF) antennas to transmit and receive RF signals to other devices.



What is the base station communication distance



ICNIRP , Base Stations

Over large distances, the signals must be relayed by a communication network comprising base stations and often supported by a wired network. The power of a base station varies (typically ...

What Is the Role of a Base Station in Wireless Communication?

Jun 27, 2025 · Base stations are the backbone of wireless communication networks, playing a pivotal role in signal transmission, network reliability, and high-speed data connectivity. As ...



Base stations and networks

5 days ago · Base stations enable mobile communications Mobile phones and other mobile devices require a network of base stations in order to function. The base station antennas ...

Base Station Antenna Height Recommendations Explained

Mar 17, 2025 · Explore base station antenna heights for optimal coverage in urban and rural settings according to ITU-R P.1410 standards.



[How Is the Transmission Distance of Communication ...](#)

Jul 16, 2025 · In wireless communication system design, accurately calculating the transmission distance of communication antennas is a critical step to ensure stable signal coverage. ...



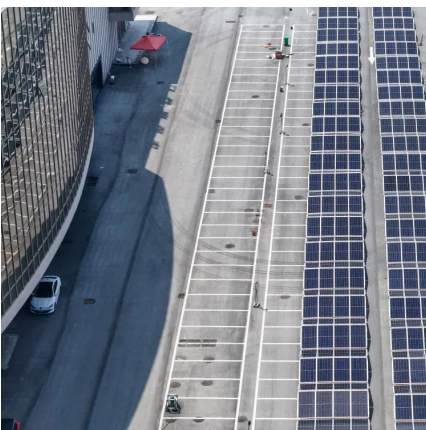
What Is A Base Station?

Apr 22, 2024 · A base station is an integral component of wireless communication networks, serving as a central point that manages the transmission and reception of signals between ...



[What are Base Station in Telecommunications?](#)

Nov 21, 2025 · A base station connects your phone to the network. It acts as a hub between mobile devices and the core system.





Base stations and networks

Base Stations Enable Mobile Communications
Antennas Are Placed in Various Locations
More Mobile Devices Means More Base Stations
Base Station Output Power Is Low
Exposure Limits Are Set by Independent Organizations
Exposure Levels Are Much Lower Than The Limits
Public Access Is Restricted Where Needed
No Adverse Health Effects According to The WHO
Base station antennas direct the radio signals away from the building or mast to obtain coverage in a certain area. The intensity of the radio waves is drastically reduced as the distance increases from the base station antenna. On the ground, in houses, and other places where people reside, the exposure levels from radio base stations are normally See more on ericsson Sanny Telecom



What Is A Base Station? - Sanny Telecom

Apr 22, 2024 · A base station is an integral component of wireless communication networks, serving as a central point that manages the ...



What Is a Base Station? Definition and How It Works

Oct 10, 2025 · A base station is a fixed transceiver that serves as the central communication point for mobile devices within a defined geographical area, known as a cell. It is sometimes called ...

What is a base station?

Mar 4, 2021 · In telecommunications, a base station is a fixed transceiver that is the main communication point for one or more wireless mobile client devices.



Base Stations

Jul 23, 2025 · The present-day tele-space is incomplete without the base stations as these constitute an important part of the modern-day scheme of wireless communications. They are ...



[Base Station Antenna Height ...](#)

Mar 17, 2025 · Explore base station antenna heights for optimal coverage in urban and rural settings according to ITU-R P.1410 standards.



Contact Us

For technical specifications, project proposals, or partnership inquiries, please visit:
<https://meble-decorator.pl>



Scan QR Code for More Information



<https://meble-decorator.pl>