

What is the maximum voltage of 5g base station





Overview

How much power does a 5G station use?

The power consumption of a single 5G station is 2.5 to 3.5 times higher than that of a single 4G station. The main factor behind this increase in 5G power consumption is the high power usage of the active antenna unit (AAU). Under a full workload, a single station uses nearly 3700W.

Why does 5G use more power than 4G?

The data here all comes from operators on the front lines, and we can draw the following valuable conclusions: The power consumption of a single 5G station is 2.5 to 3.5 times higher than that of a single 4G station. The main factor behind this increase in 5G power consumption is the high power usage of the active antenna unit (AAU).

How many antennas does 5G have?

In the 5G millimeter wave era, antennas are getting smaller and smaller, and the number is increasing in pairs. Nowadays, most 4G mobile phones are 2×2, 5G is at least 4×4, and the base station antennas have as many as 128 or 256 antennas. The Internet of Things also requires antennas.

What is a 5G base station?

A 5G base station is mainly composed of the baseband unit (BBU) and the AAU — in 4G terms, the AAU is the remote radio unit (RRU) plus antenna. The role of the BBU is to handle baseband digital signal processing, while the AAU converts the baseband digital signal into an analog signal, and then modulates it into a high-frequency radio signal.



What is the maximum voltage of 5g base station



[Voltage levels of 5G base stations in Iran](#)

The load of a 5G base station primarily consists of communication equipment and auxiliary components. The communication equipment mainly includes Active Antenna Unit (AAU) and ...

[Front Line Data Study about 5G Power Consumption](#)

The power consumption of a single 5G station is 2.5 to 3.5 times higher than that of a single 4G station. The main factor behind this increase in 5G power consumption is the high power ...



[An Introduction to 5G and How MPS Products Can ...](#)

Feb 11, 2025 · This article described the basics of 5G and introduced two MPS parts -- the MPQ8645 and MP87190 -- that can be used to improve the AAU or BBU architecture within a ...

[Front Line Data Study about 5G Power ...](#)

The power consumption of a single 5G station is 2.5 to 3.5 times higher than that of a single 4G station. The main factor behind this increase in 5G ...



[Understanding 5G Antenna Requirements Blog](#)

Apr 1, 2024 · In the 5G millimeter wave era, antennas are getting smaller and smaller, and the number is increasing in pairs. Nowadays, most 4G mobile phones are 2×2, 5G is at least 4×4, ...



[Murata-Base-station-app-guide](#)

Sep 30, 2022 · To design effective and long-lasting 5G infrastructure, the architecture of the base stations should be considered right down to the level of components. When selecting a ...



[5G Transmit Power and Antenna radiation](#)

Electromagnetic Waves
Electromagnetic Radiation
Non-Ionizing Radiation
Characteristics
Regulation
5G Nr Transmit Power
EMF on 5G Ran Antenna Systems
EMF Calculation For 5G Systems
The RF output power is strongly depending on the available bandwidth and on the target data rate. Output power is typically limited by the EMF constraints of the site. In general, the nominal output power has to be defined by the cell size and the required data





rate at the cell edge. Nevertheless, assuming that a 3.5GHz 5G antenna has between 22 dB
See more on 5ghub monolithicpower [PDF]

An Introduction to 5G and How MPS Products Can ...

Feb 11, 2025 · This article described the basics of 5G and introduced two MPS parts -- the MPQ8645 and MP87190 -- that can be used to improve the AAU or BBU architecture within a ...

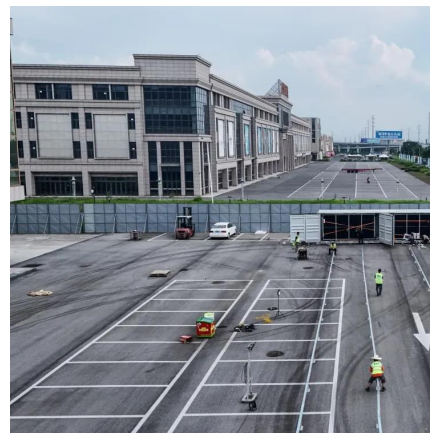
[Understanding 5G Antenna Requirements ...](#)

Apr 1, 2024 · In the 5G millimeter wave era, antennas are getting smaller and smaller, and the number is increasing in pairs. Nowadays, most 4G ...



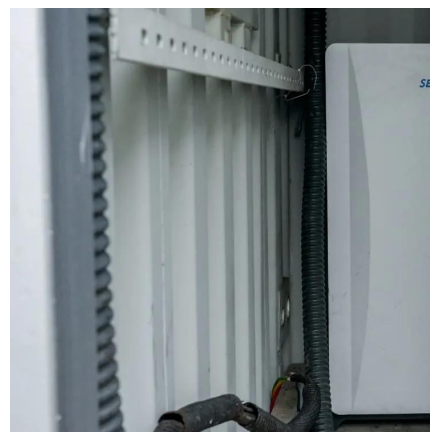
[Uninterrupted Power for 5G Base Stations: How the 51.2V ...](#)

Apr 14, 2025 · While a typical lead-acid battery lasts 300-500 cycles (2-3 years) before capacity plummets, the 51.2V rack battery delivers 6,000+ cycles at 80% depth of discharge, ensuring a ...



TS 138 113

Aug 5, 2024 · IEC 61000-3-11: "Electromagnetic compatibility (EMC) - Part 3-11: Limits - Limitation of voltage changes, voltage fluctuations and flicker in low-voltage supply systems - ...





5G Transmit Power and Antenna radiation

Nov 27, 2025 · To keep the power density per MHz similar to LTE systems, the 100MHz 3.5GHz spectrum will require 5x 80 W, which is not easy to be achieved. 5G trials need to define a ...

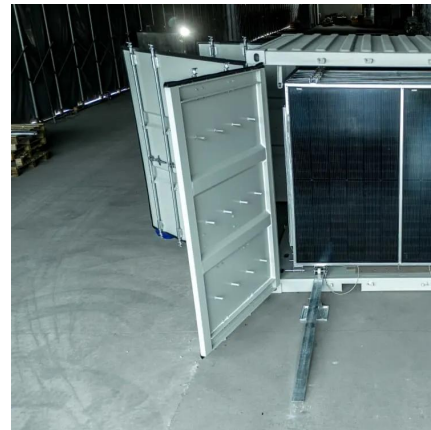


Maximum electric field estimation in the vicinity of 5G base stations

Jan 1, 2023 · Introduction/purpose: This paper presents initial development of the procedure for electric field estimation in the vicinity of 5G base stations.

Maximum electric field estimation in the vicinity of 5G base stations

Jan 1, 2023 · Introduction/purpose: This paper presents initial development of the procedure for electric field estimation in the vicinity of 5G base stations.



5G Measurements: UE and Base Station Testing Overview

Explore 5G measurements for User Equipment (UE) and Base Stations (BS), covering transmitter and receiver test scenarios, conformance, and network stability.





Contact Us

For technical specifications, project proposals, or partnership inquiries, please visit:
<https://meble-decorator.pl>

Scan QR Code for More Information



<https://meble-decorator.pl>