

# **What s inside a cylindrical lithium iron phosphate battery**





## Overview

---

What are lithium iron phosphate (LiFePO<sub>4</sub>) batteries?

Lithium iron phosphate (LiFePO<sub>4</sub>) batteries are known for their high safety, long cycle life, and excellent thermal stability. They come in three main cell types: cylindrical, prismatic, and pouch. Each of these types has distinct characteristics that make them suitable for various applications.

What are the different types of lithium phosphate batteries?

1. Cylindrical LiFePO<sub>4</sub> Cells Cylindrical LiFePO<sub>4</sub> cells are the most commonly used type of lithium iron phosphate batteries. They resemble the shape of traditional AA or AAA batteries and are widely employed in applications where high power and durability are essential.

What are lithium iron phosphate batteries made of?

Lithium iron phosphate batteries consist of a positive electrode made of lithium iron phosphate, a negative electrode made of graphite, an electrolyte, and a separator. LiFePO<sub>4</sub> serves as the positive electrode of the battery, with a polymer separator in the middle that separates the positive and negative electrodes.

What is a cylindrical lithium ion battery?

Cylindrical cells are one of the most widely used lithium ion battery shapes due to ease of use and good mechanical stability. The tubular cylindrical shape can withstand high internal pressures without collapsing. Melasta produces multiple sizes and capacities according to the customer requirement.



## What s inside a cylindrical lithium iron phosphate battery

---

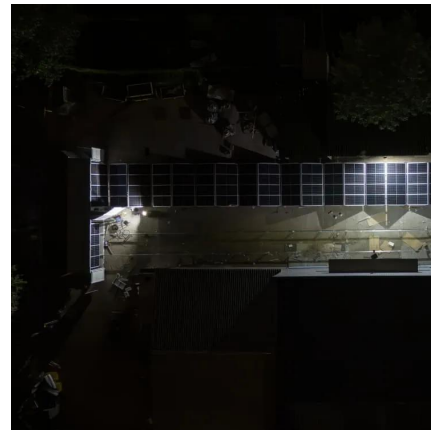


### Types of LiFePO4 Battery Cells: Cylindrical, ...

6 days ago · Lithium iron phosphate (LiFePO4) batteries are known for their high safety, long cycle life, and excellent thermal stability. They come in ...

### LiFe-Shenzhen Melasta Battery Co., Ltd

Jul 4, 2023 · These cells have high density and light weight which enable this technology to use in multiple devices.Lithium Iron Phosphate Cylindrical ...



### LiFe-Shenzhen Melasta Battery Co., Ltd

Jul 4, 2023 · These cells have high density and light weight which enable this technology to use in multiple devices.Lithium Iron Phosphate Cylindrical Cells Cylindrical cells one of the most ...

### Rechargeable lithium iron phosphate battery ...

What is a lithium iron phosphate battery cells?  
There are different terms when people talking about lithium iron phosphate battery. Most of China ...



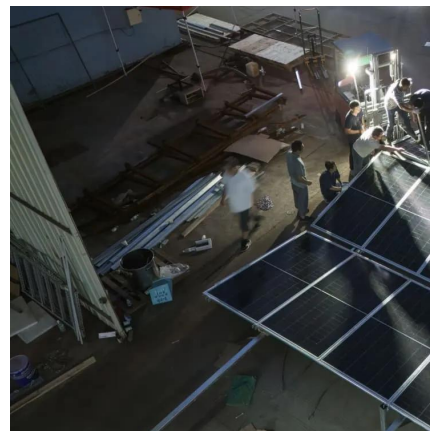
## LiFePO4 Battery Cell: Prismatic vs Pouch vs Cylindrical Lithium ...

Mar 3, 2025 · A LiFePO4 cylindrical lithium-ion battery is a type of rechargeable battery that features a cylindrical shape and uses Lithium Iron Phosphate (LiFePO4) as the cathode material.



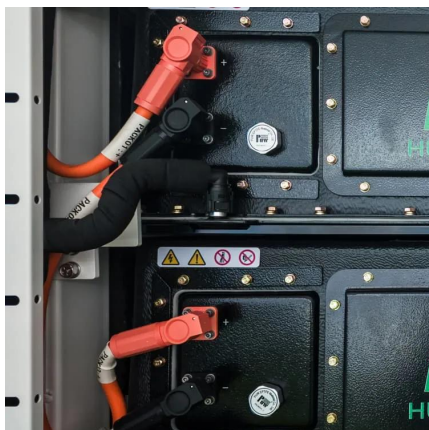
## [Understanding LiFePO4 Batteries: A Comprehensive Guide](#)

Apr 23, 2024 · Introduction In the realm of energy storage solutions, Lithium Iron Phosphate (LiFePO4) batteries have emerged as a revolutionary technology, offering unparalleled ...



## [What is Cylindrical Lithium Iron Phosphate Battery? Uses](#)

Oct 5, 2025 · A Cylindrical Lithium Iron Phosphate battery is a type of lithium-ion battery characterized by its cylindrical shape, typically with dimensions like 18650 or 26650.







## Rechargeable lithium iron phosphate battery cylindrical & prismatic

What is a lithium iron phosphate battery cells?  
There are different terms when people talking about lithium iron phosphate battery. Most of China supplier call it LiFePO4 battery for short or ...



### [LiFePO4 Battery Cell:Prismatic vs Pouch VS ...](#)

Mar 3, 2025 · A LiFePO4 cylindrical lithium-ion battery is a type of rechargeable battery that features a cylindrical shape and uses Lithium ...



### [Understanding Lithium Iron Phosphate Battery Cells: ...](#)

Oct 26, 2024 · In summary, lithium iron phosphate battery cells offer a compelling combination of high energy density, long cycle life, and enhanced safety features, making them an ideal ...



## Lithium Iron Phosphate

Lithium Iron Phosphate abbreviated as LFP is a lithium ion cathode material with graphite used as the anode. This cell chemistry is typically lower energy density than NMC or NCA, but is also ...



## Types of LiFePO4 Battery Cells: Cylindrical, Prismatic, and ...

6 days ago · Lithium iron phosphate (LiFePO4) batteries are known for their high safety, long cycle life, and excellent thermal stability. They come in three main cell types: cylindrical, ...



## **Pouch vs. Prismatic vs. Cylindrical? Your Lithium Battery Cell ...**

Jul 29, 2025 · Selecting the right lithium battery isn't just about finding the right capacity or price, it's about understanding what's inside. The type of battery cell (pouch, prismatic, or cylindrical) ...



## Lifepo4 Battery Composition Structure And Working Principle

Dec 17, 2024 · Lifepo4 battery refers to a lithium-ion battery using lithium iron phosphate as the positive electrode material. It is a secondary lithium-ion battery widely used in electric vehicles, ...



## Pouch vs. Prismatic vs. Cylindrical? Your ...

Jul 29, 2025 · Selecting the right lithium battery isn't just about finding the right capacity or price, it's about understanding what's inside. The type of ...



## Contact Us

---

For technical specifications, project proposals, or partnership inquiries, please visit:  
<https://meble-decorator.pl>

### Scan QR Code for More Information



<https://meble-decorator.pl>