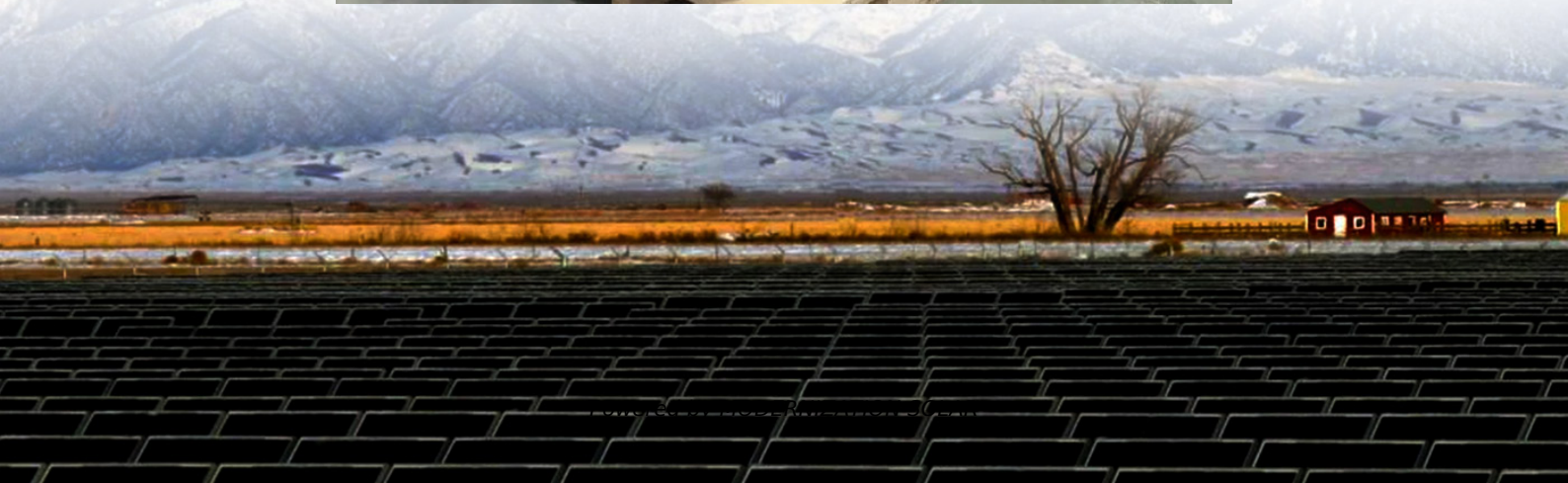


# **What to do if the battery cabinet on an aircraft loses power**





## Overview

---

What should I do when installing batteries in an aircraft?

Installing batteries—When installing batteries in an aircraft, exercise care to prevent inadvertent shorting of the battery terminals. Serious damage to the aircraft structure (frame, skin and other subsystems, avionics, wire, fuel, etc.) can be sustained by the resultant high discharge of electrical energy.

What is aircraft battery inspection?

Aircraft battery inspection consists of the following items: Inspect battery sump jar and lines for condition and security. Inspect battery terminals and quickly disconnect plugs and pins for evidence of corrosion, pitting, arcing, and burns. Clean as required. Inspect battery drain and vent lines for restriction, deterioration, and security.

How do airplane batteries work?

Air is carried from a scoop outside the airplane through a vent tube to the interior of the battery case. After passing over the top of the battery, air, battery gasses, and acid fumes are carried through another tube to the battery sump. This sump is a glass or plastic jar of at least one pint capacity.

What if a plane loses all electrical power?

If a plane were to lose "all" electrical power, there is no "switch" to save the day. But as Flyboy said, aircraft are redundant (as in generators, backup-generators, batteries, and back-up batteries) The odds of a total electrical failure are slim to none. Do not know if your question is for light airplanes or for airliners.



## What to do if the battery cabinet on an aircraft loses power

---



### What if my alternator or battery fails in flight

So what if my alternator fails in flight ? To answer this question we performed a test with the ULPower engine on the dyno and its' alternator not ...

### Electrical Malfunctions

A battery or batteries provides power to start the engine (s), absorb voltage surges and compensate for voltage drops, and serve as an emergency source of system power should the ...



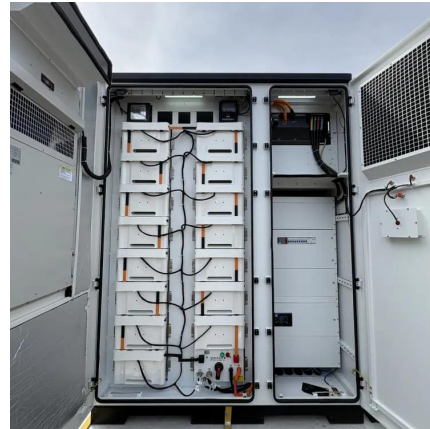
### Essential Aircraft Battery Care Tips for Longevity

Feb 21, 2025 · Proper aircraft battery maintenance is essential for ensuring the longevity and reliability of your aircraft's electrical system. Whether ...



### What If A Plane Loses Electrical Power?

Aug 13, 2002 · If a plane were to lose "all" electrical power, there is no "switch" to save the day. But as Flyboy said, aircraft are redundant (as in generators, backup- generators, batteries, and ...



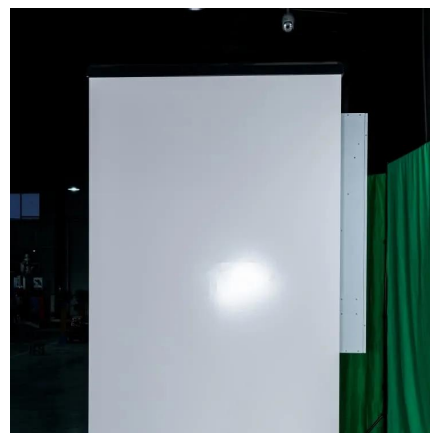
### [Aircraft Battery Maintenance, Inspection and ...](#)

2 days ago · Aircraft Battery Inspection Aircraft battery inspection consists of the following items: Inspect battery sump jar and lines for condition and ...



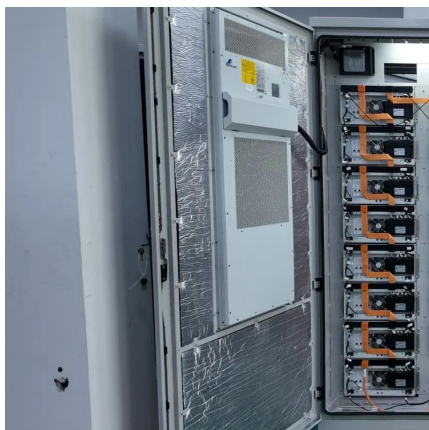
### [Five Aircraft Battery Myths That Could Leave You Grounded](#)

5 days ago · Discover the truth behind five common aircraft battery myths that could leave you grounded. Learn the essential care tips for this vital electrical system.



### [What if my alternator or battery fails in flight](#)

So what if my alternator fails in flight ? To answer this question we performed a test with the ULPower engine on the dyno and its' alternator not connected to the battery. Before starting ...







## Essential Aircraft Battery Care Tips for Longevity

Feb 21, 2025 · Proper aircraft battery maintenance is essential for ensuring the longevity and reliability of your aircraft's electrical system. Whether you are an MRO station, a general ...

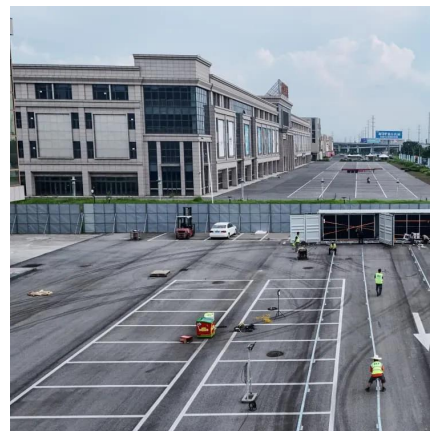


## Your Complete Aircraft Battery Guide

Jul 21, 2025 · The battery is one of the most important, although most neglected, parts of aviation. The battery plays a pivotal role in determining ...

## Your Complete Aircraft Battery Guide

Jul 21, 2025 · The battery is one of the most important, although most neglected, parts of aviation. The battery plays a pivotal role in determining the dependability of an aircraft as it is the one ...



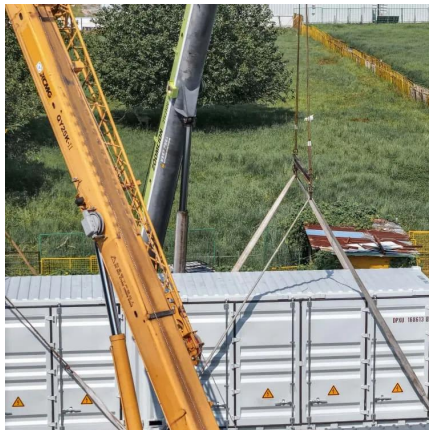
## Aircraft Battery Maintenance, Inspection and Troubleshooting

2 days ago · Aircraft Battery Inspection Aircraft battery inspection consists of the following items: Inspect battery sump jar and lines for condition and security. Inspect battery terminals and ...



## How aircraft generate electricity and what happens if it fails ...

Sep 7, 2022 · What to consider If a generator fails, backup systems such as the auxiliary power unit or ram air turbine can supply necessary electricity. On the ground, batteries provide ...



## [How aircraft generate electricity and what ...](#)

Sep 7, 2022 · What to consider If a generator fails, backup systems such as the auxiliary power unit or ram air turbine can supply necessary ...

## [Essential Guide to Aircraft Battery Storage: Best Practices](#)

May 5, 2025 · Discover key strategies for aircraft battery storage, including temperature control, maintenance tips, and emerging technologies to ensure optimal performance and safety.



## [Aviation Battery Maintenance Article 20250521](#)

May 27, 2025 · Achieving all these objectives requires a specialized charging scheme that can precisely maintain the battery's state-of-charge, control sulfation, and monitor battery health ...



## Contact Us

---

For technical specifications, project proposals, or partnership inquiries, please visit:  
<https://meble-decorator.pl>

### Scan QR Code for More Information



<https://meble-decorator.pl>